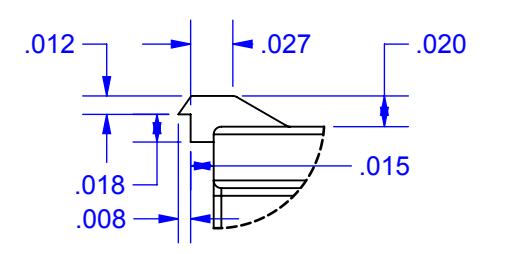
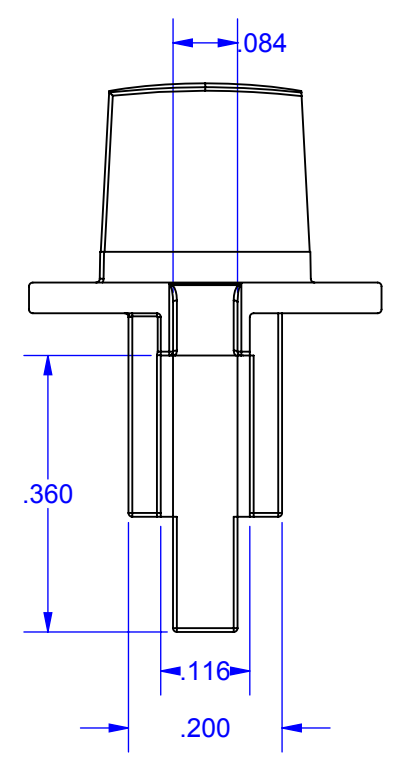
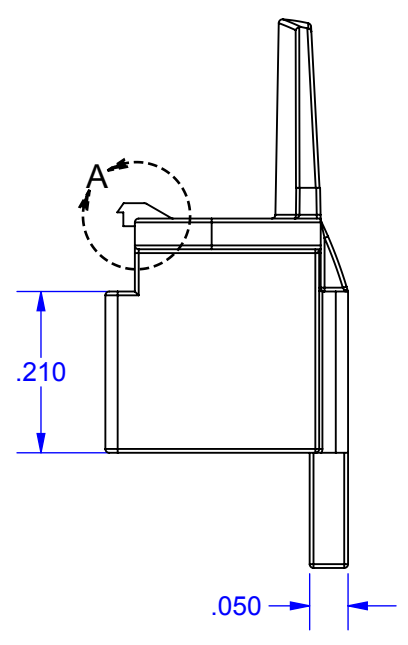
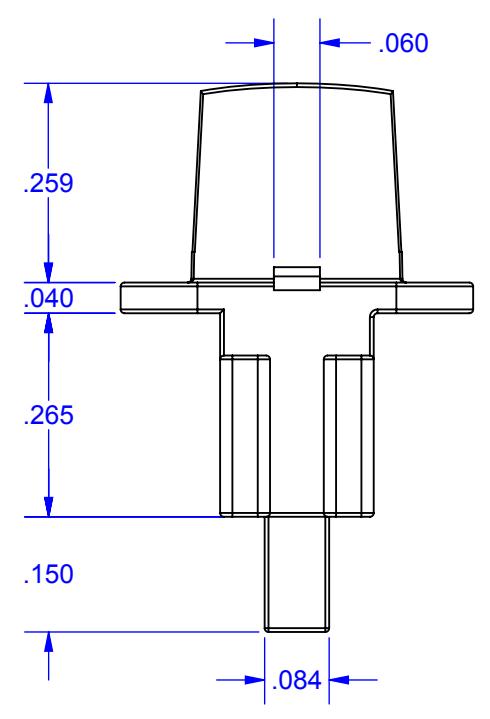
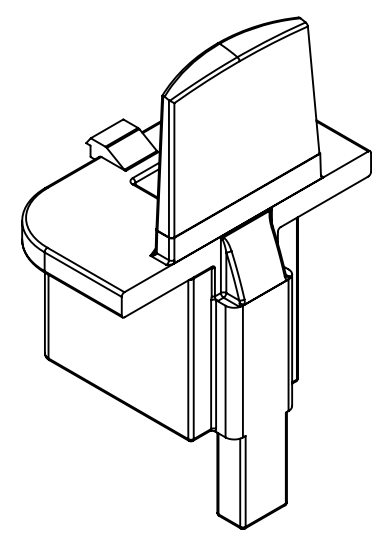
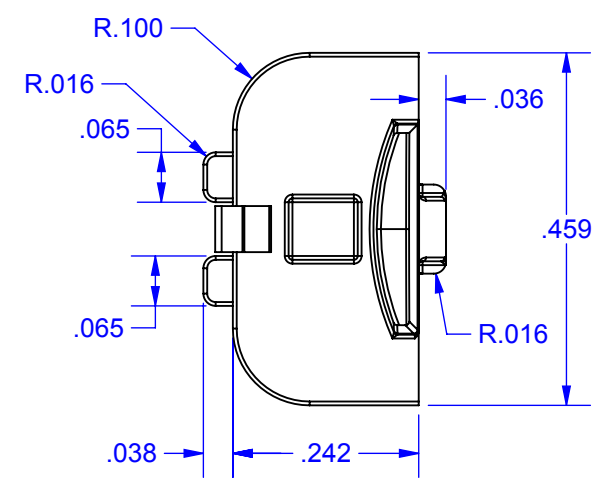
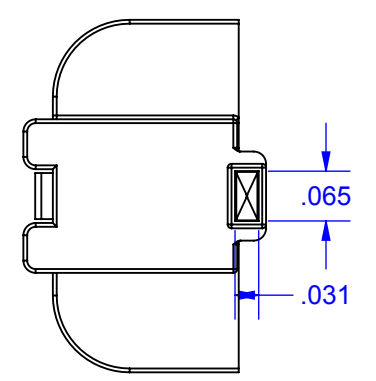


D
C
B
A



DETAIL A
SCALE 8 : 1



FOR ALL ADDITIONAL DIMENSIONS SEE 3D MODEL

Fabrication Notes Unless Otherwise Specified:
 1.) All dimensions are in inches.
 2.) Remove all burrs and sharp corners.
 3.) All threads to be free of paint and debris.
 4.) All welds to be ground or polished.
 5.) Tolerances: X.XXX = +/- 0.010in (0.254mm)
 X.XXX = +/- 0.005in (0.127mm)
 X.XXX = +/- 0.015in (0.381mm) per bend,
 Max cumulative +/- 0.031in (0.7874mm)
 Formed Angles: +/- 1°
 6.) Purchased parts must be RoHS
 directive compliant.

Electronic Theatre Controls, Inc.
 3031 Pleasant View Rd., Middleton, Wisconsin 53562
 Tel: 608-831-4116 Fax: 608-836-1736 www.etconnect.com

The information contained in this drawing is the sole property of ETC. Any reproduction in part or whole without the written permission of ETC is prohibited.

Title block created by: CAW Date: 11/06/15 Rev: 12.0

| REV | ECM | DESCRIPTION | DATE | BY | APP |
|-----|-----|-------------|------|----|-----|
| | | | | | |

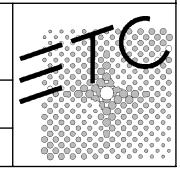
PART NUMBER: **5452-076A** REVISION: **03** FINISH:

DESCRIPTION: **Heritage Button Station - Moving Piece**

MATERIAL:

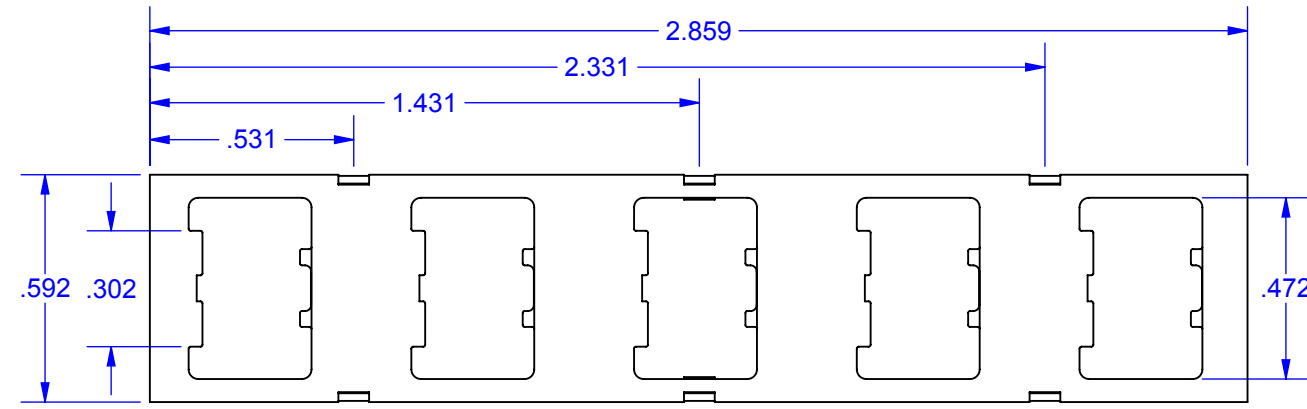
DESIGNED BY: **ehelvajian** DATE: **06/24/2016** SHEET: **1 OF 1**

CAD GENERATED DRAWING B SIZE - DO NOT SCALE PRINT SCALE: **4:1**

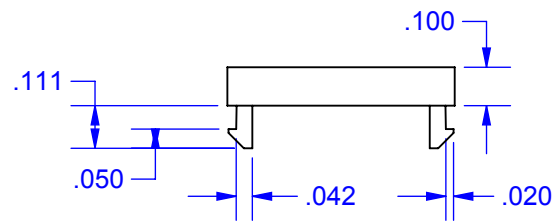


D
C
B
A

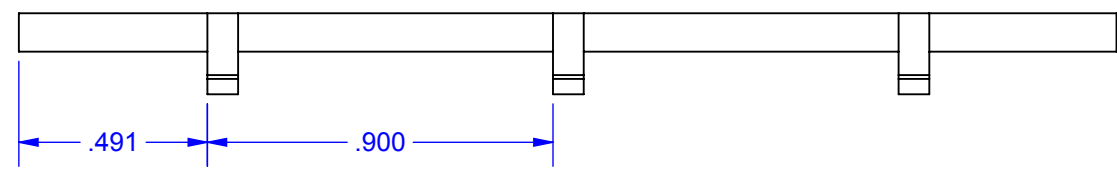
TOP VIEW



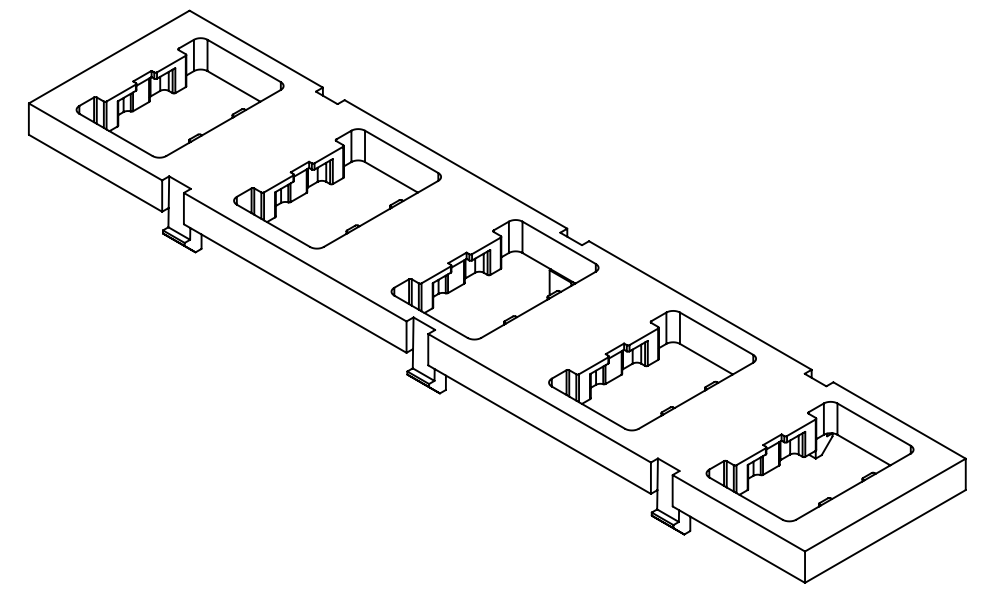
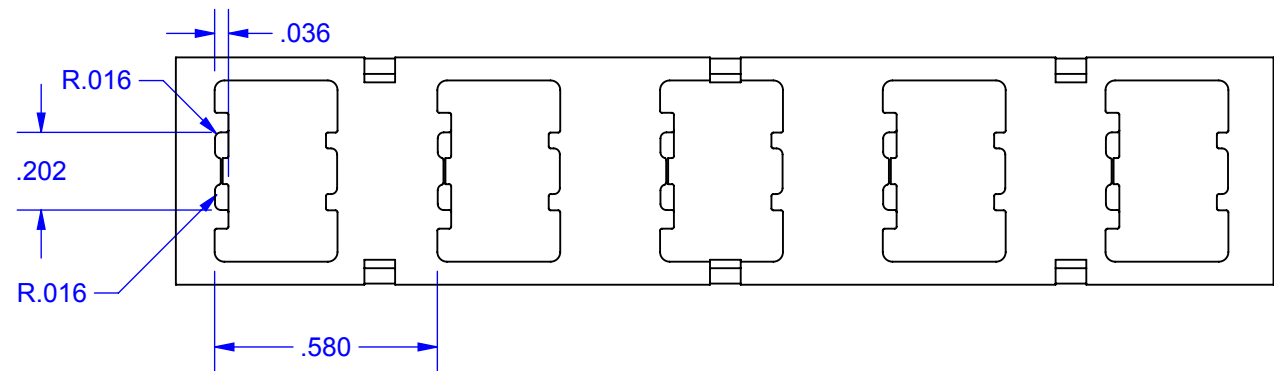
SIDE VIEW



FRONT VIEW



BOTTOM VIEW



FOR ALL ADDITIONAL DIMENSIONS SEE 3D MODEL

Fabrication Notes Unless Otherwise Specified:
 1.) All dimensions are in inches.
 2.) Remove all burrs and sharp corners.
 3.) All threads to be free of paint and debris.
 4.) All welds to be ground or polished.
 5.) Tolerances: X.XX = +/- 0.010in (0.254mm)
 X.XXX = +/- 0.005in (0.127mm)
 Forming: +/- 0.015in (0.381mm) per bend,
 Max cumulative +/- 0.031in (0.7874mm)
 Formed Angles: +/- 1°
 6.) Purchased parts must be RoHS
 directive compliant.

Electronic Theatre Controls, Inc.
 3031 Pleasant View Rd., Middleton, Wisconsin 53562
 Tel: 608-831-4116 Fax: 608-836-1736 www.etconnect.com

PART NUMBER: **5452-07B** REVISION: **03** FINISH:
 DESCRIPTION: **Heritage Button Station - Plate**

MATERIAL:

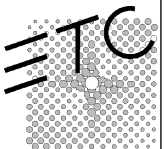
DESIGNED BY: **ehelvajian** DATE: **08/01/2016** SHEET **1 OF 1**

CAD GENERATED DRAWING B SIZE - DO NOT SCALE PRINT SCALE: **4:1**

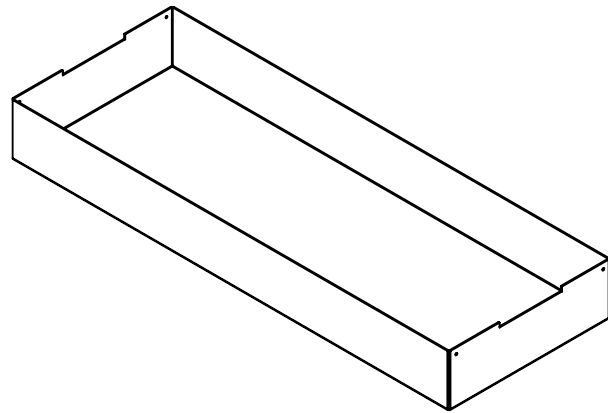
The information contained in this drawing is the sole property of ETC. Any reproduction in part or whole without the written permission of ETC is prohibited.

Title block created by: CAW Date: 11/06/15 Rev: 12.0

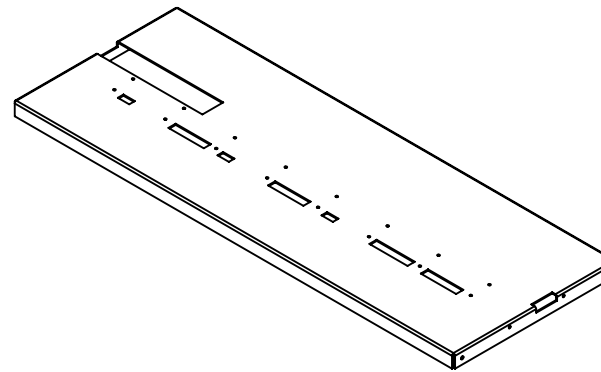
| REV | ECM | DESCRIPTION | DATE | BY | APP |
|-----|-----|-------------|------|----|-----|
| | | | | | |
| | | | | | |
| | | | | | |



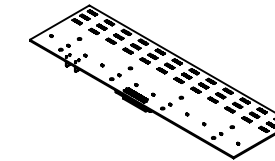
ALL PARTS AND COMPONENTS



BOX BOTTOM X1 - METAL SHOP: GNS 16GA



BOX TOP X1 - METAL SHOP: GNS 16GA



TEST BOARD X2 - PCB

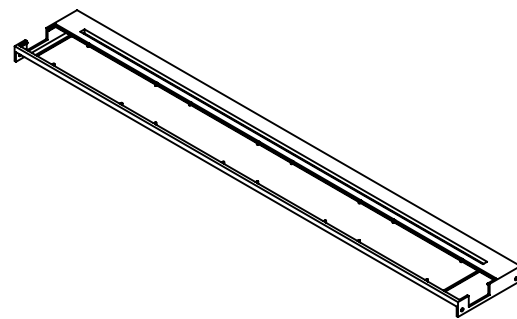
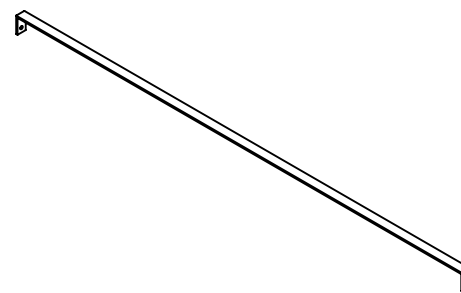


PLATE TO HOLD TESTED BOARDS X1 -
MIDWEST PROTOTYPING - ACCURA XTREME WHITE 200



COVER TO HOLD TESTED BOARDS IN PLACE X1 -
MIDWEST PROTOTYPING - ACCURA XTREME WHITE 200



HW2288 X 22 - SCR 6-32 x 3/16 Ph PH MS SS
SCALE: 1:1



HW2116 X 2 - SCR 6-32 x 3/16 Ph PH MS SS
SCALE: 1:1

Fabrication Notes Unless Otherwise Specified:

- 1.) All dimensions are in inches.
- 2.) Remove all burrs and sharp corners.
- 3.) All threads to be free of paint and debris.
- 4.) All welds to be ground or polished.
- 5.) Tolerances: X.XX = +/- 0.010in (0.254mm)
X.XXX = +/- 0.005in (0.127mm)
- 6.) Purchased parts must be RoHS directive compliant.

Forming: +/- 0.015in (0.381mm) per bend,
Max cumulative +/- 0.031in (0.7874mm)
Formed Angles: +/- 1°



Electronic Theatre Controls, Inc.
3031 Pleasant View Rd., Middleton, Wisconsin 53562
Tel: 608-831-4116 Fax: 608-836-1736 www.etconnect.com

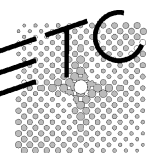
| | | |
|-------------------|-----------|-----------|
| PART NUMBER: | REVISION: | FINISH: |
| Test Rig Assembly | 01 | SEE NOTES |

DESCRIPTION:
Assembly for Sensor IQ Test Rig

MATERIAL:

| | | |
|--------------|------------|--------|
| DESIGNED BY: | DATE: | SHEET |
| ehelvajian | 07/18/2016 | 2 OF 6 |

| | | |
|--|--------|-----|
| CAD GENERATED DRAWING B SIZE - DO NOT SCALE PRINT | SCALE: | 1:8 |
|--|--------|-----|



The information contained in this drawing is the sole property of ETC. Any reproduction in part or whole without the written permission of ETC is prohibited.

Title block created by: CAW Date: 11/06/15 Rev: 12.0

| REV | ECM | DESCRIPTION | DATE | BY | APP |
|-----|-----|-------------|------|----|-----|
| | | | | | |
| | | | | | |
| | | | | | |
| | | | | | |

1

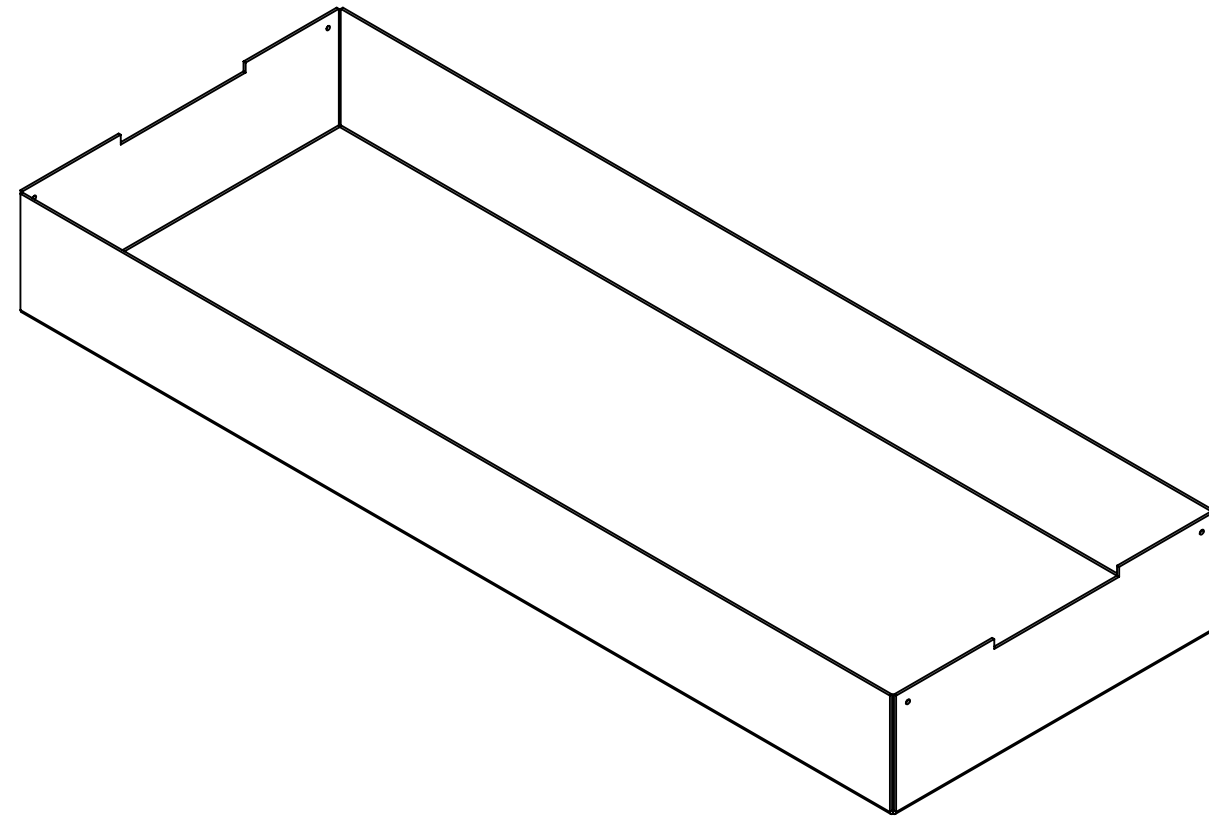
2

3

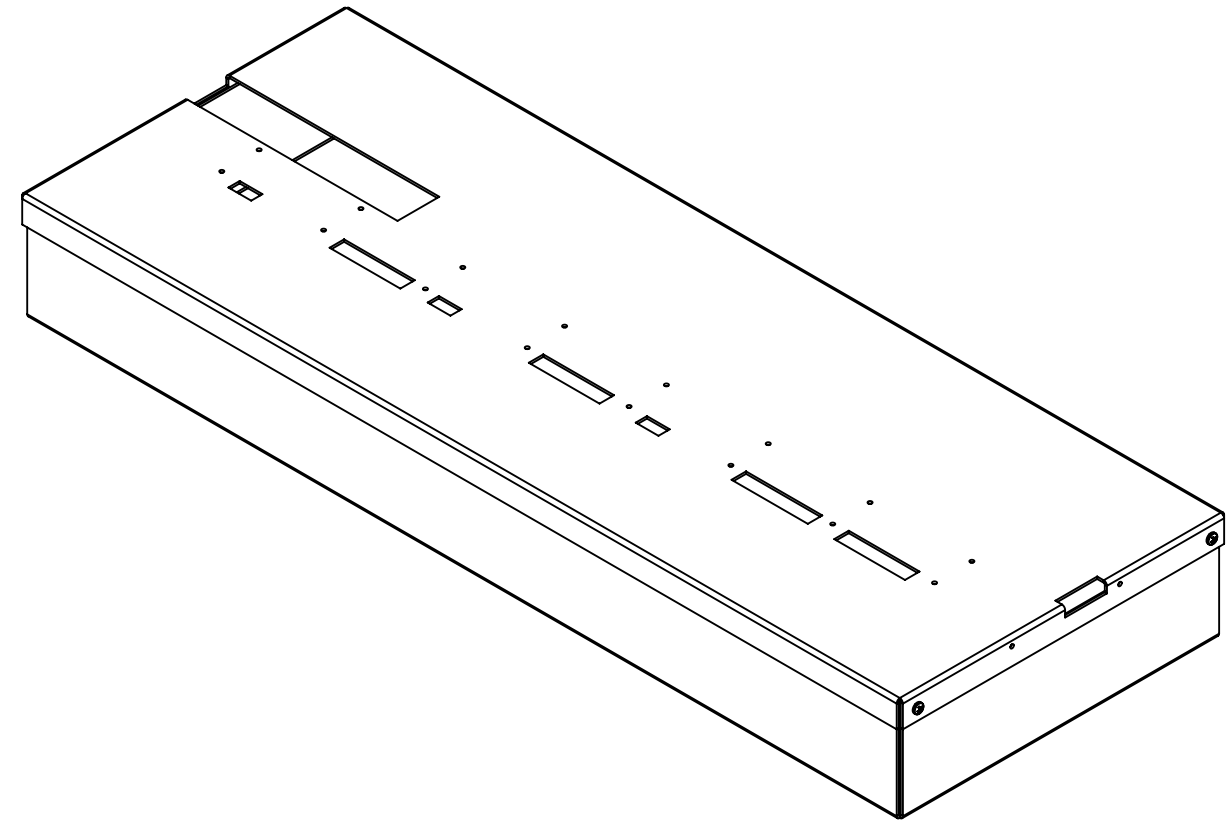
4

5

6



① BOX BOTTOM (ALL COMPONENTS INSIDE BOX NOT PICTURED)



② ADD: BOX TOP
HW2288 X4

Fabrication Notes Unless Otherwise Specified:
 1.) All dimensions are in inches.
 2.) Remove all burrs and sharp corners.
 3.) All threads to be free of paint and debris.
 4.) All welds to be ground or polished.
 5.) Tolerances: X.XX = +/- 0.010in (0.254mm)
 X.XXX = +/- 0.005in (0.127mm)
 Forming: +/- 0.015in (0.381mm) per bend,
 Max cumulative +/- 0.031in (0.7874mm)
 Formed Angles: +/- 1°
 6.) Purchased parts must be RoHS directive compliant.

Electronic Theatre Controls, Inc.
 3031 Pleasant View Rd., Middleton, Wisconsin 53562
 Tel: 608-831-4116 Fax: 608-836-1736 www.etcconnect.com

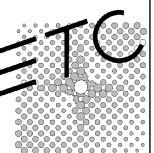
PART NUMBER: **Test Rig Assembly** REVISION: **01** FINISH: **SEE NOTES**

DESCRIPTION:
Assembly for Sensor IQ Test Rig

MATERIAL:

DESIGNED BY: **ehelvajian** DATE: **07/18/2016** SHEET: **3 OF 6**

CAD GENERATED DRAWING B SIZE - DO NOT SCALE PRINT SCALE: **1:4**



The information contained in this drawing is the sole property of ETC. Any reproduction in part or whole without the written permission of ETC is prohibited.

Title block created by: CAW Date: 11/06/15 Rev: 12.0



| REV | ECM | DESCRIPTION | DATE | BY | APP |
|-----|-----|-------------|------|----|-----|
| | | | | | |
| | | | | | |
| | | | | | |

1

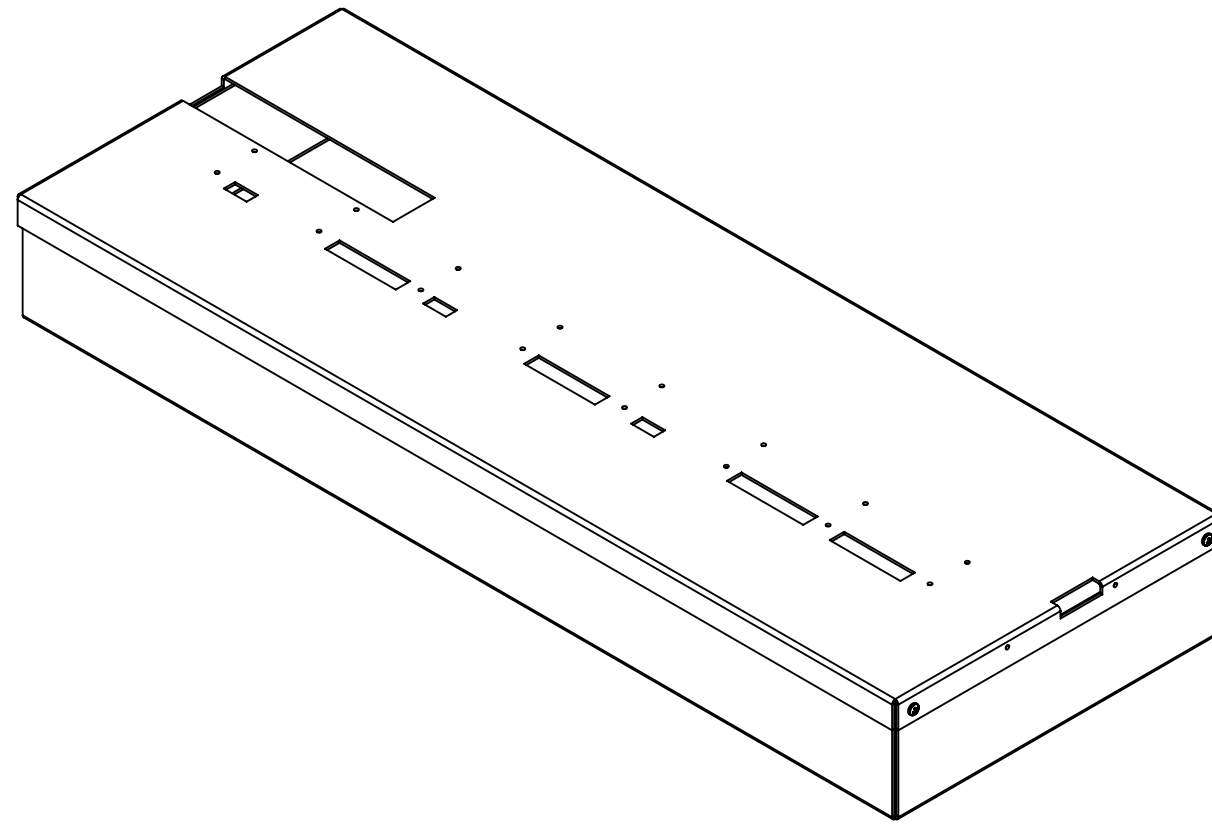
2

3

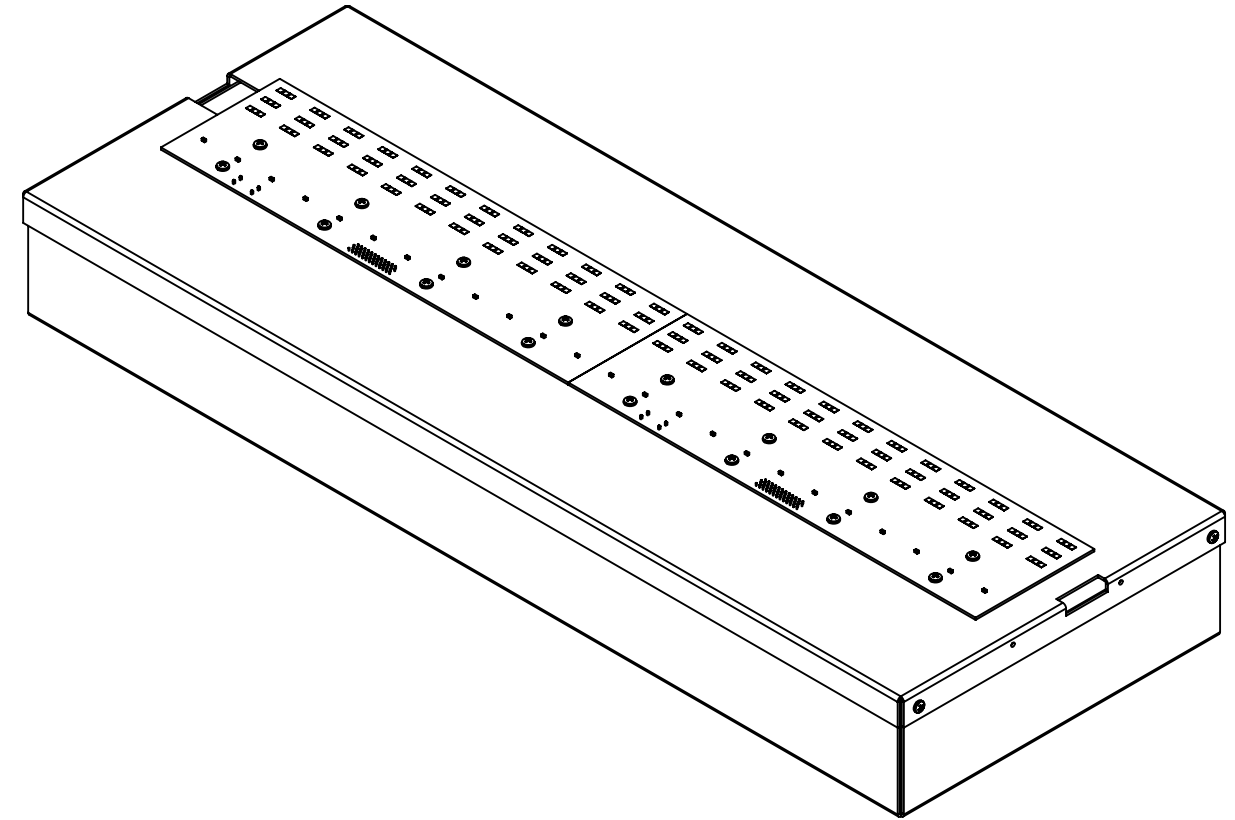
4

5

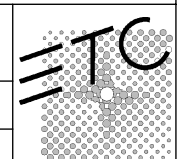
6



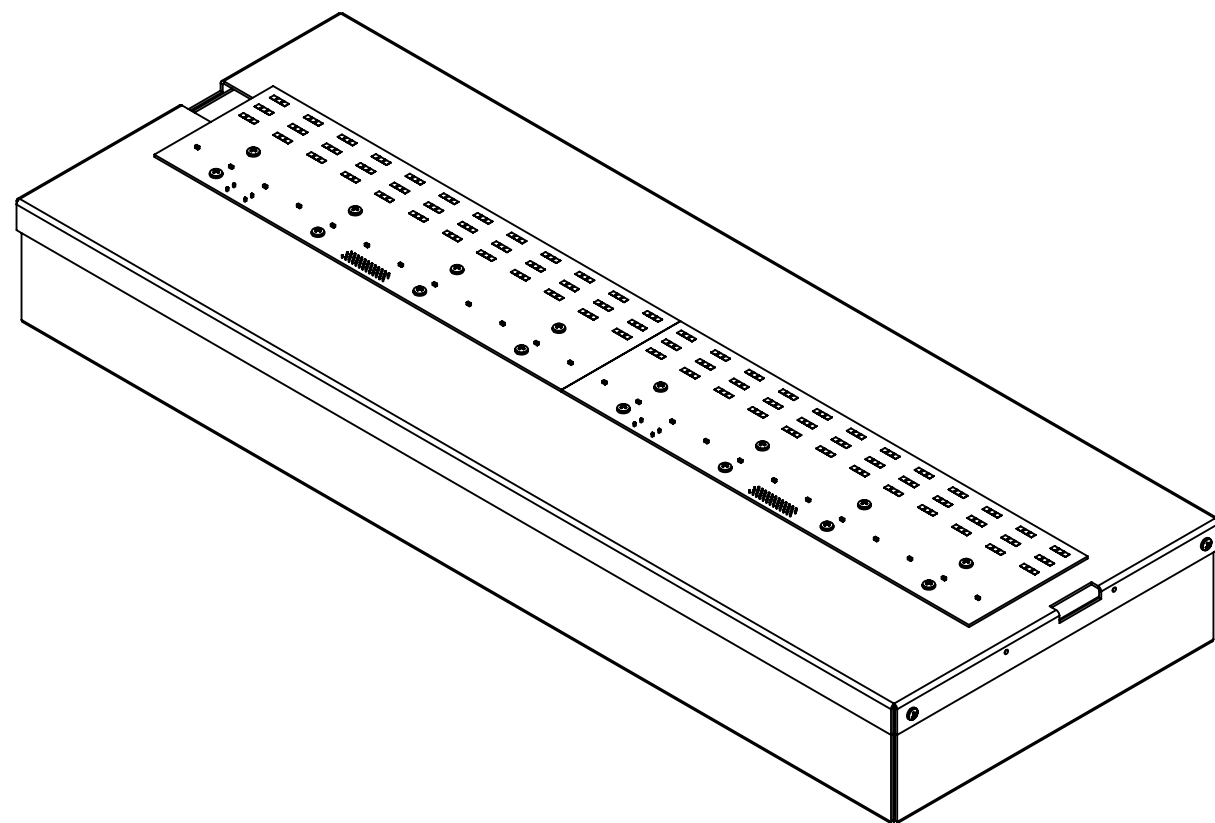
② BOX BOTTOM,BOX TOP, HW2288 X4



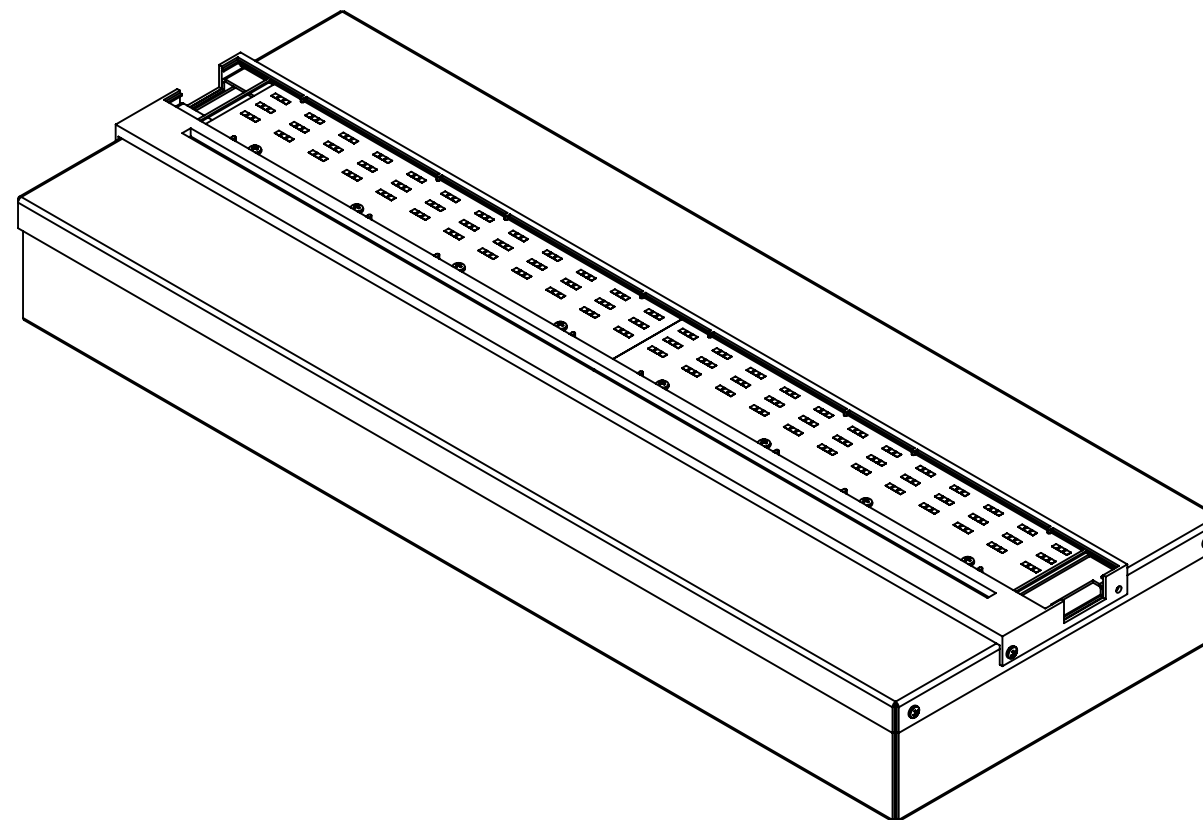
③ ADD: TEST BOARD X2
HW2288 X16

| | | | | | |
|--|-----|--|------------------------------------|--|---|
| <p>The information contained in this drawing is the sole property of ETC. Any reproduction in part or whole without the written permission of ETC is prohibited.</p> <p>Title block created by: CAW Date: 11/06/15 Rev: 12.0</p> | | <p>Fabrication Notes Unless Otherwise Specified: 1.) All dimensions are in inches. 2.) Remove all burrs and sharp corners. 3.) All threads to be free of paint and debris. 4.) All welds to be ground or polished. 5.) Tolerances: X.XX = +/- 0.010in (0.254mm) X.XXX = +/- 0.005in (0.127mm) Forming: +/- 0.015in (0.381mm) per bend, Max cumulative +/- 0.031in (0.7874mm) Formed Angles: +/- 1° 6.) Purchased parts must be RoHS directive compliant.</p> | | <p>Electronic Theatre Controls, Inc. 3031 Pleasant View Rd., Middleton, Wisconsin 53562 Tel: 608-831-4116 Fax: 608-836-1736 www.etconnect.com</p> | |
| <p>Part Number: Test Rig Assembly</p> | | <p>Revision: 01</p> | <p>Finish: SEE NOTES</p> | <p>DESCRIPTION: Assembly for Sensor IQ Test Rig</p> | |
| <p>MATERIAL:</p> | | <p>DESIGNED BY: ehelvajian</p> | <p>DATE: 07/18/2016</p> | <p>SHEET 4 OF 6</p> |  |
| <p>CAD GENERATED DRAWING B SIZE - DO NOT SCALE PRINT</p> | | <p>SCALE: 1:4</p> | <p>3RD ANGLE</p> | | |
| REV | ECM | DESCRIPTION | DATE | BY | APP |
| 1 | 2 | 3 | 4 | 5 | 6 |

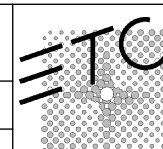
D
C
B
A



③ BOX BOTTOM,BOX TOP, TEST BOARD X2, HW2288 X20



④ ADD: TESTING PLATE HW2288 X2

| | | | | | | | |
|---|-----|--|------|---|-----|---|--|
| The information contained in this drawing is the sole property of ETC. Any reproduction in part or whole without the written permission of ETC is prohibited. | | Title block created by: CAW Date: 11/06/15 Rev: 12.0 | | Fabrication Notes Unless Otherwise Specified: 1.) All dimensions are in inches. 2.) Remove all burrs and sharp corners. 3.) All threads to be free of paint and debris. 4.) All welds to be ground or polished. 5.) Tolerances: X.XX = +/- 0.010in (0.254mm) X.XXX = +/- 0.005in (0.127mm) Forming: +/- 0.015in (0.381mm) per bend, Max cumulative +/- 0.031in (0.7874mm) Formed Angles: +/- 1° 6.) Purchased parts must be RoHS directive compliant. | | Electronic Theatre Controls, Inc. 3031 Pleasant View Rd., Middleton, Wisconsin 53562 Tel: 608-831-4116 Fax: 608-836-1736 www.etconnect.com | |
| PART NUMBER: | | REVISION: | | FINISH: | | DESCRIPTION: | |
| Test Rig Assembly | | 01 | | SEE NOTES | | Assembly for Sensor IQ Test Rig | |
| MATERIAL: | | | | | | | |
| DESIGNED BY: | | DATE: | | SHEET | |  | |
| ehelvajian | | 07/18/2016 | | 5 OF 6 | | | |
| CAD GENERATED DRAWING B SIZE - DO NOT SCALE PRINT | | | | SCALE: | | 1:4 | |
| REV | ECM | DESCRIPTION | DATE | BY | APP | | |

1

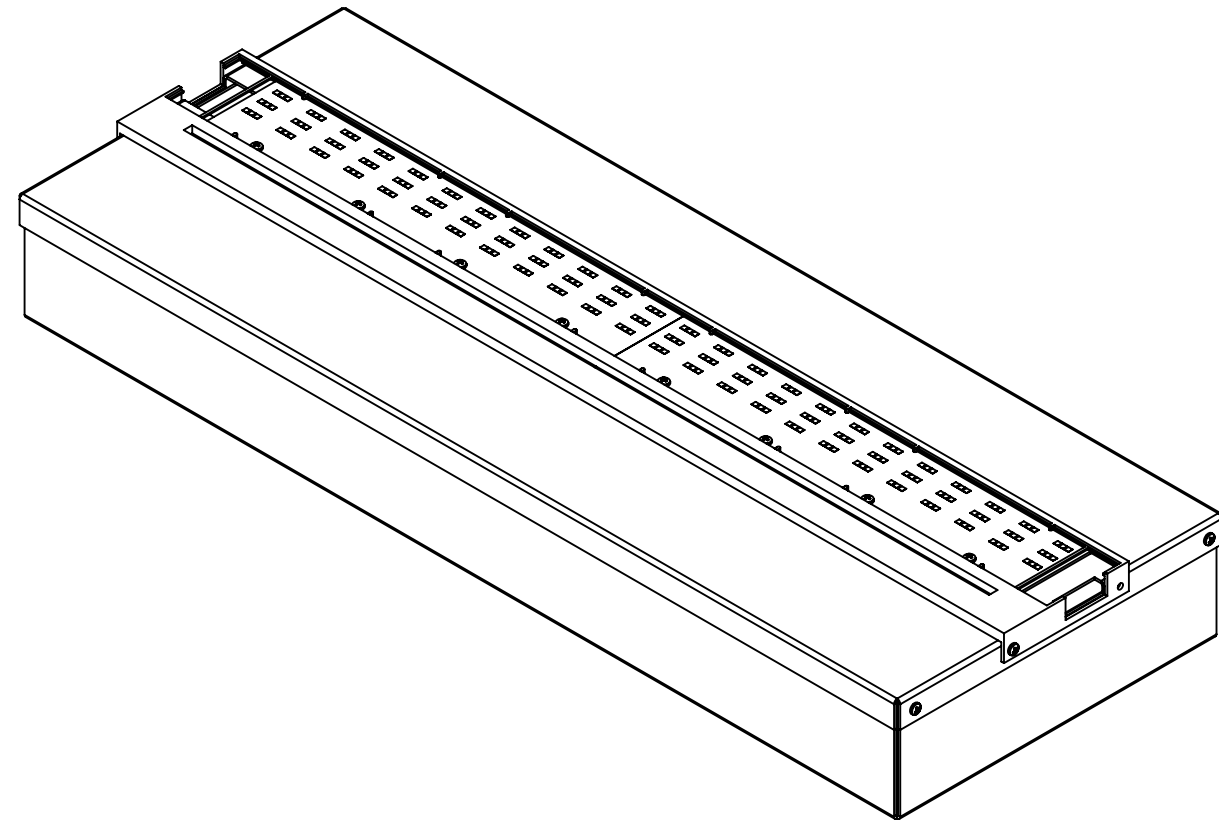
2

3

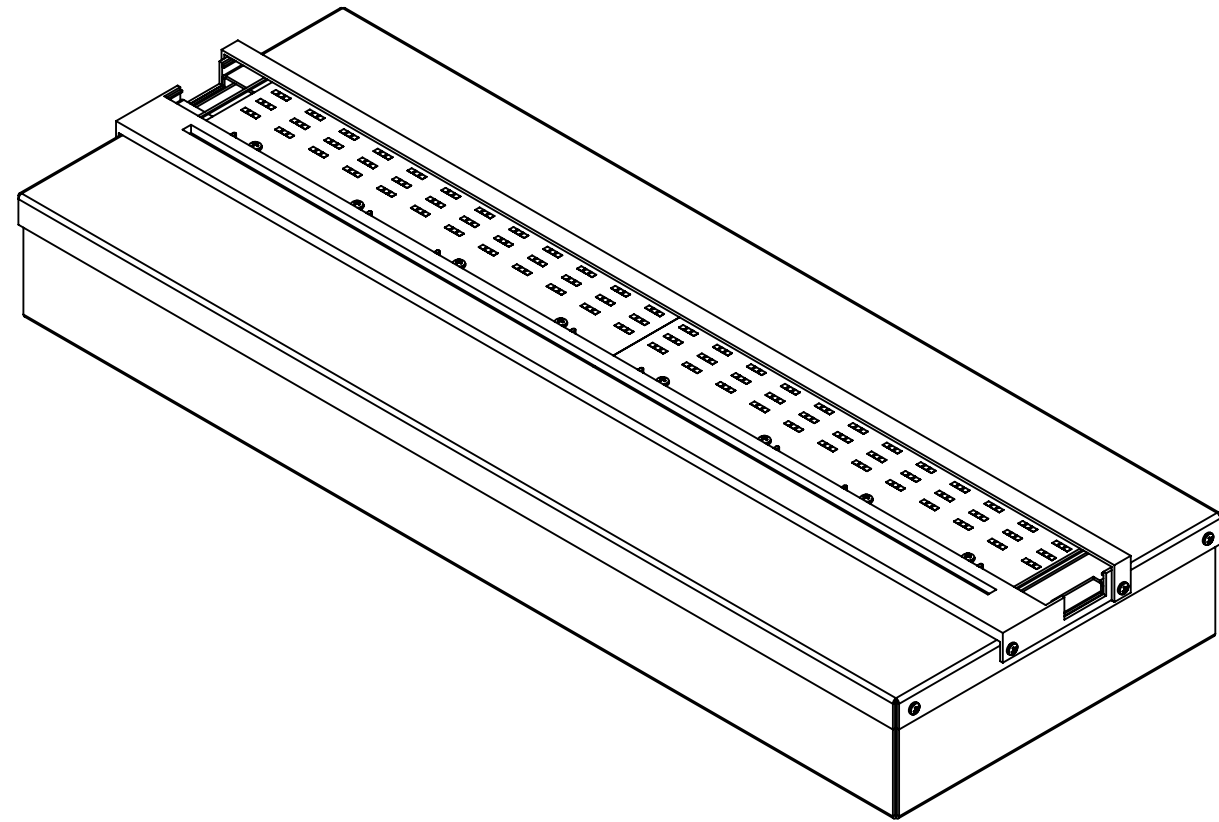
4

5

6

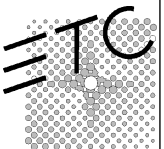


④ BOX BOTTOM,BOX TOP, TEST BOARD X2, TESTING PLATE, HW2288 X22



⑤ ADD: BOARD BEING TESTED (NOT PICTURED)
COVER
HW2116 X2

BOX BOTTOM,BOX TOP, TEST BOARD X2, TESTING PLATE,
COVER, HW2288 X22, HW2116 X2

| | | | | | | | |
|---|-----|--|------|---|-----|---|--|
| The information contained in this drawing is the sole property of ETC. Any reproduction in part or whole without the written permission of ETC is prohibited. | | Title block created by: CAW Date: 11/06/15 Rev: 12.0 | | Fabrication Notes Unless Otherwise Specified: 1.) All dimensions are in inches. 2.) Remove all burrs and sharp corners. 3.) All threads to be free of paint and debris. 4.) All welds to be ground or polished. 5.) Tolerances: X.XX = +/- 0.010in (0.254mm) X.XXX = +/- 0.005in (0.127mm) Forming: +/- 0.015in (0.381mm) per bend, Max cumulative +/- 0.031in (0.7874mm) Formed Angles: +/- 1° 6.) Purchased parts must be RoHS directive compliant. | | Electronic Theatre Controls, Inc. 3031 Pleasant View Rd., Middleton, Wisconsin 53562 Tel: 608-831-4116 Fax: 608-836-1736 www.etconnect.com | |
| PART NUMBER: Test Rig Assembly | | REVISION: 01 | | FINISH: SEE NOTES | | DESCRIPTION: Assembly for Sensor IQ Test Rig | |
| MATERIAL: | | DESIGNED BY: ehelvajian | | DATE: 07/18/2016 | | SHEET 6 OF 6 | |
| CAD GENERATED DRAWING B SIZE - DO NOT SCALE PRINT | | SCALE: 1:4 | |  | | | |
| REV | ECM | DESCRIPTION | DATE | BY | APP | | |

1

2

3

4

5

6

D

C

B

A